

## TOREO - P650

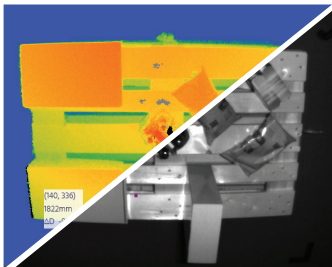
ToF + Stereo + Embedded AI



The TOREO - P650 is a depth sensor for use in applications where either Stereo or ToF is not enough. The housing with its protective class IP 67 covers the hardware from dust and water and facilitates the installation outdoor and in tough environments.

The smart depth sensor IC delivers depth information and grey value image data for each pixel. Two RGB sensor modules deliver a color data stream. The data is collected by a NVIDIA Tegra TX2 processing module, which calculates stereoscopic 3D data from the RGB modules.

The actual coverage is up to 5 m indoor and up to 3 m outdoor with a field view of 60°. A 3D data stream is provided by a 1 GBit Ethernet interface.



Depth Data

Grey Value



Color Data

### APPLICATIONS

- Bin Picking
- Agriculture
- Freight Measurement
- Livestock
- HMI for Industrial Robots
- Range Measurements



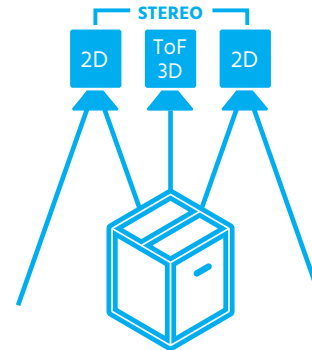
becom-group

# TOREO - P650

ToF + Stereo + Embedded AI

Making the Most  
out of two Worlds

Into the Future  
with Sensor Fusion



## SPECIFICATIONS

Dimensions	230 x 148 x 106 mm
Temperature	-40 to 60 °C
Application Range	up to 5 m*
FoV	60°
Resolution 3D	640 x 480 px ToF
Resolution 2D	2 x 13 Mpx RGB Sensors
FPS	up to 30 fps*
Illumination	850 nm
Protection Class	IP67

\*depending on scenario

## OPERATING SYSTEMS

Linux, Windows

## FRAMEWORKS

Halcon\*, Data Spree (Deep Learning DS, Inference DS)

## INTERFACES

Gbit/s-Ethernet (eight pole X-coded M12)

Trigger In, Reset

2 Outputs, Power (twelve pole M12)

\*to be announced

## SCOPE OF SUPPLY

### CAMERA

PON: 150-3086-1

TOREO - P650

### ACCESSORIES

TOREO - P650 Mounting Kit

ETH Cable

Power Supply

Power + IO Cable

SW / Support Online Link



becom-group